



# **GULFSTREAM G450**

## **N455KH    S/N 4120**

### **Specifications and Summary**

## 2008 Gulfstream G450



**OFFERED AT: \$11,495,000**

**AIRCRAFT HIGHLIGHTS:**

- Starlink Internet
- Lux Stream KU and GOGO L3
- Enrolled in Engine & APU Programs
- Enrolled in CASP and HAPP Programs
- Enhanced Soundproofing
- 14 Pax with AFT Galley
- 2018 Paint
- Enhanced Navigation / Synthetic Vision

**STATUS:** As of April 15, 2025

**TOTAL TIME:** 6,678 hours  
**LANDINGS:** 2,515 cycles  
**ENGINES:** Rolls Royce TAY Mk 611-8C

	<b>Engine 1</b>	<b>Engine 2</b>
<b>Serial Number:</b>	85241	85240
<b>Total Time Since New:</b>	6,361	6,361
<b>Cycles Since New:</b>	2,515	2,515

*Engines enrolled on Rolls Royce Corporate Care Enhanced*

**APU:** Honeywell GTCP36-150(GIV)  
**Serial Number:** P-235  
**TSN:** 4,958  
**Cycles:** 5,652

*APU Enrolled on MSP Gold*

**CAPABILITIES:**

FANS 1/A	BRNAV	Synthetic Vision	FM Immunity	RVSM
CPDLC	VNAV	8.33 Spacing	HUD w/EVS	MNPS
ADS-B Out	RNP-10	TCAS 7.1	Auto Throttles	WAAS / LPV

## AVIONICS & COCKPIT



### **AVIONICS: Honeywell Primus Epic PlaneView® Cockpit with Enhanced Navigation Package**

**AIR DATA COMPUTER:** Triple Honeywell AZ-200 Air Data Modules  
**AUTOMATIC DIRECTION FINDER:** Dual DF-855 ADF Modules  
**AUTOTHROTTLES SYSTEM:** Honeywell Auto Throttle  
**COCKPIT PRINTER:** TP4840 Thermal Cockpit Printer  
**COCKPIT VOICE RECORDER:** Universal Avionics  
**COMMUNICATIONS:** Dual TR-865A and third NC-860A Nav/Com LRMs  
**DIGITAL CLOCK:** Dual Digital Clocks  
**DISTANCE MEASURING EQUIPMENT:** Dual Honeywell DM-855 DME Modules  
**ELECTRONIC FLIGHT INSTRUMENT SYSTEM:** Four Honeywell DU-1310 Flat Panel Displays  
**EMERGENCY LOCATOR TRANSMITTER:** Artex C406 ELT  
**ENHANCED VISION SYSTEM:** Honeywell / Kollsman Enhanced Visual Guidance System  
**FLIGHT DATA RECORDER:** Universal Avionics Flight Data Recorder  
**HEADS UP DISPLAY:** Rockwell Collins HUD System  
**HIGH FREQUENCY RADIO:** Dual Rockwell Collins HF-9034A Receiver/Transmitters  
**LIGHTNING SENSOR:** LSZ-860 Lightning Sensor System  
**LONG RANGE NAVIGATION:** Triple Honeywell LASEREF V Micro IRUs  
**NAVIGATION:** Dual NV-875A Nav Modules  
**RADIO ALTIMETER:** Dual Honeywell Radio Altimeters  
**TRAFFIC COLLISION ALERT AND AVOIDANCE SYSTEM:** 3000SP TCAS Processor with Change 7.1  
**TERRAIN AWARENESS and WARNING SYSTEM:** Enhanced Ground Proximity Module  
**TRANSPONDER:** Dual Honeywell Transponders with version 7.1 & ADS-B Out  
**STANDBY ATTITUDE INDICATOR:** L3 Gh-3100 ESIS Standby Attitude/Altitude/Airspeed  
**WEATHER RADAR:** Honeywell Weather Radar with Dual Weather Radar Controllers



## CABIN ENTERTAINMENT & COMMUNICATIONS

### ENTERTAINMENT

- Airshow 4000
- 20" Forward LCD Monitor
- 17" Aft LCD Monitor
- (6) 7" Rosen Monitors
- Electric window shades

### COMMUNICATION

- Starlink Internet
- Aircell Axxess II
- Lux Stream KU and GOGO L3



## MAINTENANCE PROGRAMS & INSPECTIONS STATUS



### MAINTENANCE & INSPECTIONS

- Airworthiness Date: April 04, 2008
- Engines Enrolled on RRCC Enhanced
- APU Enrolled on MSP Gold
- Enrolled in CASP and HAPP Programs

#### Other ASC Compliance:

ASC 037B - Synthetic Vision  
 ASC 059C - PlaneView Enhanced Nav Package  
 ASC 077 - TCAS 7.1  
 ASC 079B - Automatic Dependent Surveillance  
 ASC 094A - Nose Landing Gear Electrical Harness Installation  
 ASC 907 - PlaneView Master Operating System Software Upgrade

<b><u>INSPECTIONS</u></b>	<b><u>LAST COMPLETED</u></b>	<b><u>NEXT DUE</u></b>
12 Month Inspection	01/2025	01/2026
24 Month Inspection	02/2024	02/2026
48 Month Inspection	02/2024	02/2028
72 Month Inspection	02/2023	02/2029
96 Month Inspection (8C)	02/2024	02/2032
144 Month Inspection (12C)	01/2024	01/2036

## INTERIOR

### INTERIOR DESCRIPTION

*(2019 Interior was recently refurbished with new coverings of panels, PSU, upper/lower sidewalls and ceiling, new carpet, new divan covering and reconditioned seats.)*

This beautiful 14 passenger configuration features a forward four-place club, followed by a mid-cabin 4-place couch opposite two club seats, and an aft 4-place conference group opposite a credenza. The aft galley features a high temperature oven, microwave oven, coffeemaker and sink.



*Forward-Cabin Looking Aft*



## INTERIOR Forward Cabin



*Forward-Cabin Looking Forward*





## INTERIOR Mid-Cabin



*Mid-Cabin Looking Aft*



*Mid-Cabin Looking Forward*



## INTERIOR Aft-Cabin



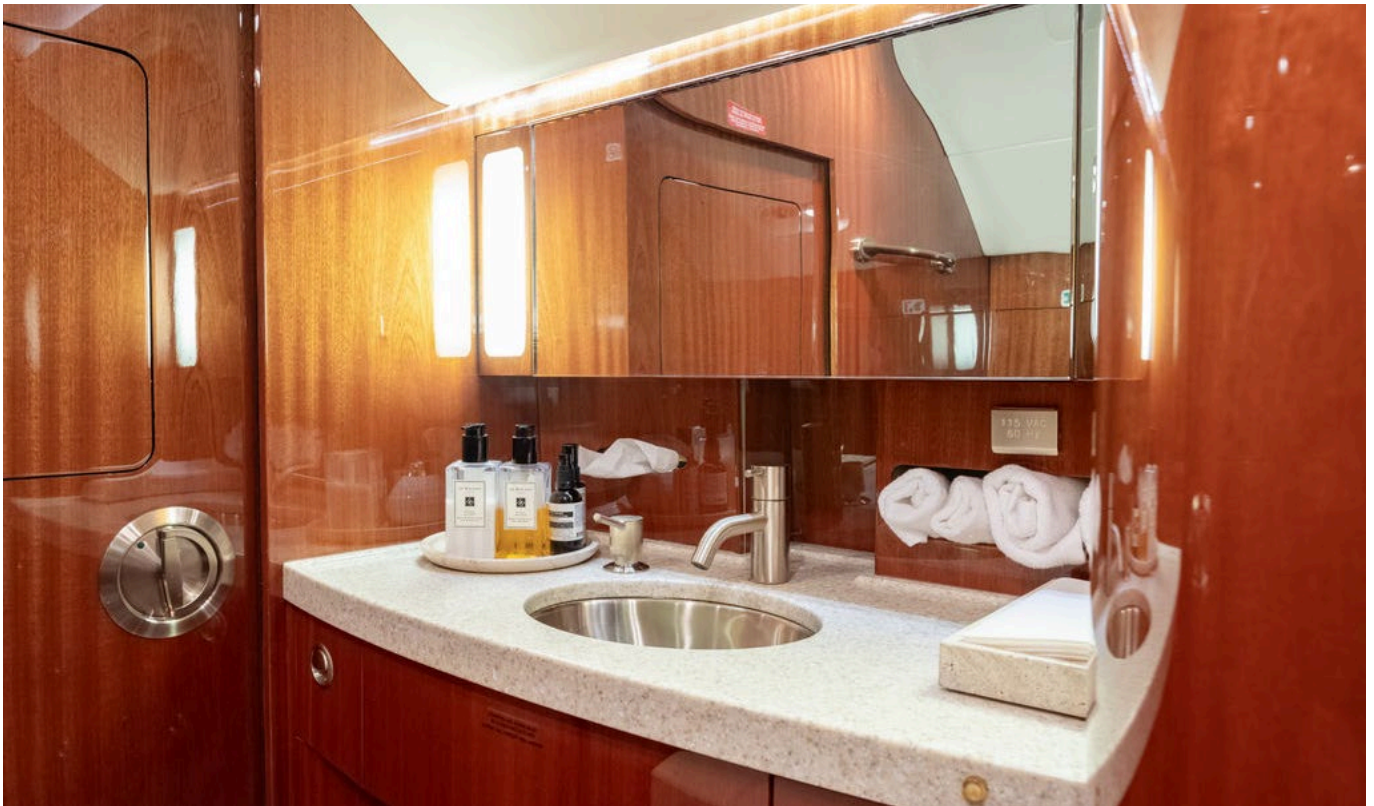
*Aft Cabin Looking Aft.*



*Aft-Cabin Looking Forward*



## AFT LAVATORY





## AFT GALLEY

### AFT GALLEY DESCRIPTION

High Temp Oven  
Microwave Oven  
Coffee Maker





## EXTERIOR

### EXTERIOR DESCRIPTION

*(2018 Paint)*

Overall white fuselage with light accents on tail and wing tips.



*This aircraft is being brokered by Guardian Jet, LLC. Prospective purchasers are encouraged to conduct their own independent pre-purchase inspection as Guardian Jet, LLC makes no representations as to the airworthiness of the aircraft or the accuracy of the above information. Specifications subject to verification upon inspection. Aircraft subject to prior sale.*

**2025 04 17 / SL**